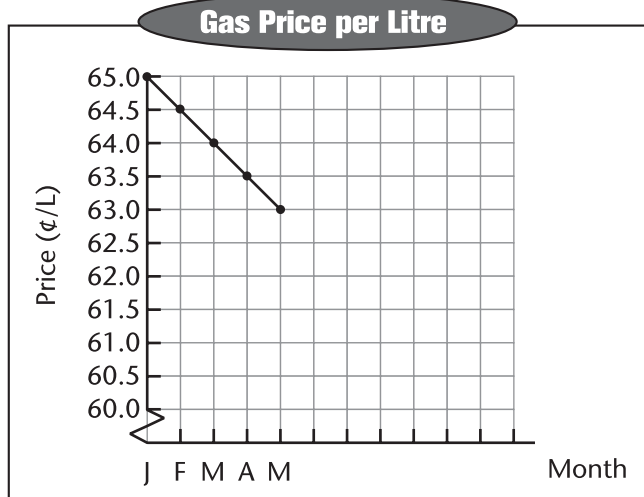


The movement of gas price follows a pattern. Follow the pattern to complete the graph and answer the questions.

13 a.

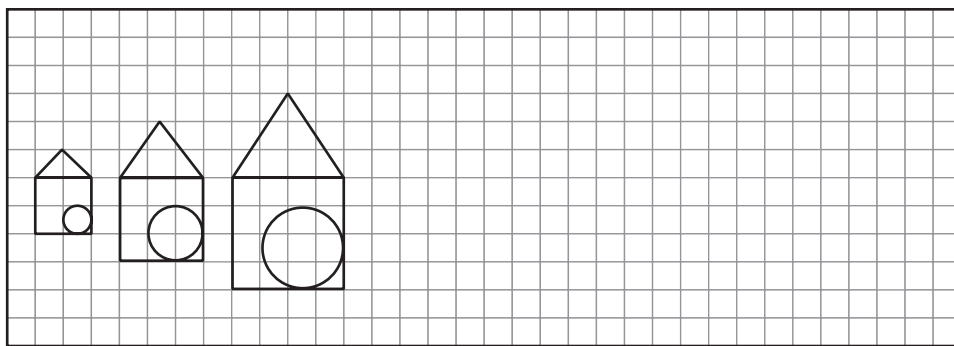


b. What will the gas price be in June?

c. When will the gas price reach 60¢?

Draw the next 2 diagrams in each pattern. Describe the changing rules for each figure.

14 a.

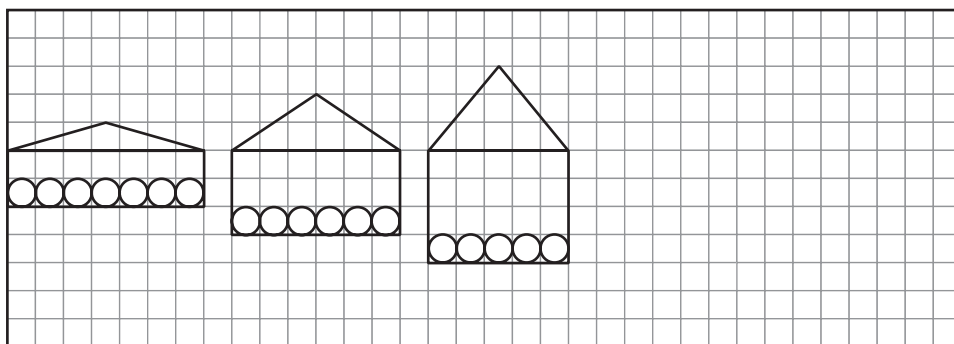


b. Triangle : _____

c. Square : _____

d. Circle : _____

15 a.



b. Triangle : _____

c. Rectangle : _____

d. Circle : _____

Read the number puzzles and find the numbers using the guess-and-test method.

16 Increase this number by 7 and then double it. The result is 70.
This number is .

17 The number is halved and then reduced by 20. The result is 30.
This number is .

18 Divide this number by 2 and then reduce it by 3. The result is 11.
This number is .

19 Add 25 to this number. Then multiply it by 3. The result is 120.
This number is .

20 This number is 7 more than half of 30.
This number is .

21 Half of this number is 7 more than 37.
This number is .

Determine the value of the missing number in each of the following equations.

22 $\underline{\hspace{2cm}} - 17 = 98$

23 $\underline{\hspace{2cm}} + 23 = 170$

24 $39 \times \underline{\hspace{2cm}} = 156$

25 $\underline{\hspace{2cm}} \times 13 = 117$

26 $85 \div \underline{\hspace{2cm}} = 17$

27 $\underline{\hspace{2cm}} \div 12 = 8$

28 $2 \times \underline{\hspace{2cm}} = 31 - 1$

29 $5 \times \underline{\hspace{2cm}} = 8 + 92$

30 $59 - 5 = \underline{\hspace{2cm}} \times 9$

31 $30 - 9 = \underline{\hspace{2cm}} \times 3$

32 $520 \div \underline{\hspace{2cm}} = 13 + 7$

33 $13 + \underline{\hspace{2cm}} = 220 \div 11$



Quick Tip
Do the part without missing terms first. Then 'guess and test' the missing numbers.



MIND BOGGLER

Stan uses toothpicks to make the following pattern. Complete the table and the statement.



No. of squares	1	2	3	4	5	6	7	8
No. of toothpicks used	4	7	10					

To make 10 squares, Stan needs $\underline{\hspace{2cm}}$ toothpicks.