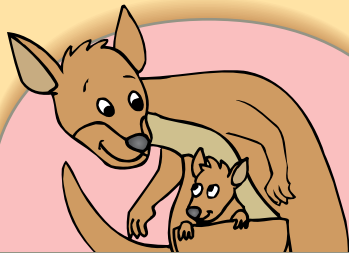


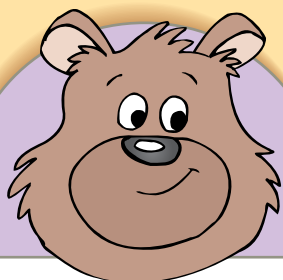
1	Beginning and Ending Consonants	4
2	Medial Consonants	8
3	Short Vowels	12
4	Long Vowels	16
5	"Y" as a Vowel	20
6	Hard and Soft "C"	24
7	Hard and Soft "G"	28
8	Consonant Blends	32
9	More Consonant Blends	36
10	Vowel Pairs "OO" and "EW"	40
11	Consonant Digraphs "CH" and "SH"	44
12	Consonant Digraphs "TH" and "WH"	48
	Review 1	52
13	Consonant Digraph "NG"	58
14	Vowel Diphthongs "OY" and "OI"	62
15	Vowel Diphthongs "OU" and "OW"	66
16	Vowel Pairs "AU" and "AW"	70
17	"R" Controlled Vowels "OR" and "AR"	74
18	"R" Controlled Vowels "ER", "IR", and "UR"	78
19	Long Vowel Digraphs "AY", "AI", and "EI"	82
20	Long Vowel Digraphs "EE" and "EA"	86
21	Long Vowel Digraphs "OA" and "OW"	90
22	Silent Consonants	94
23	Homographs	98
24	Homophones	102
	Review 2	106
	Phonics Playground	113
	Answers	121

Beginning and Ending Consonants

A. Write the beginning letter of each animal.



1. ___ angaroo



2. ___ ear



4. ___ orse



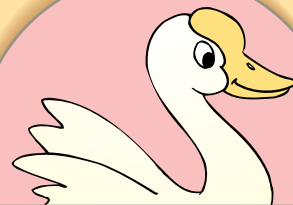
3. ___ ebra



5. ___ onkey



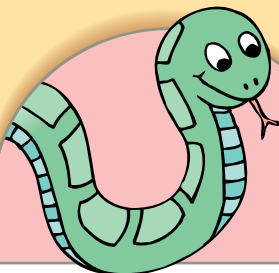
6. ___ ak



7. ___ oose



8. ___ ouse

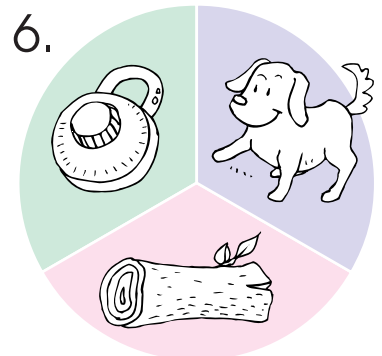
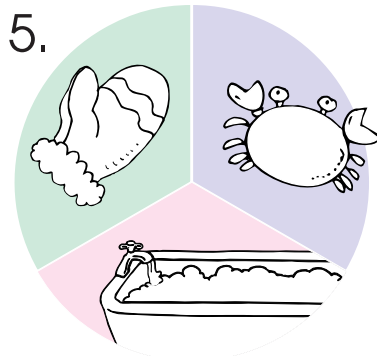
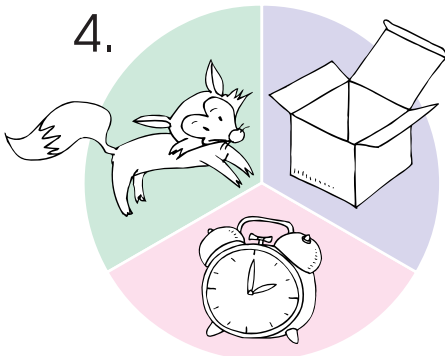
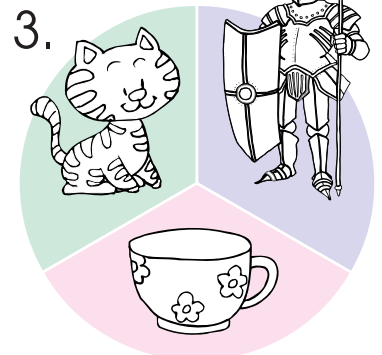
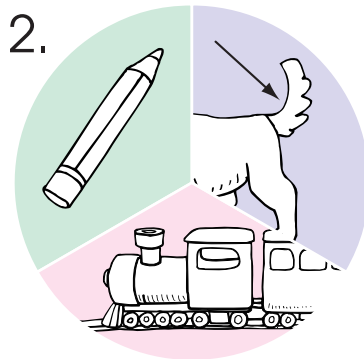
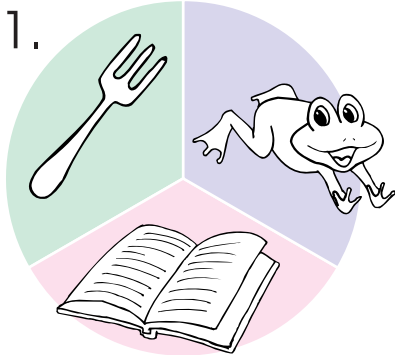


9. ___ nake



10. ___ ox

B. Colour the two that have the same ending sound.

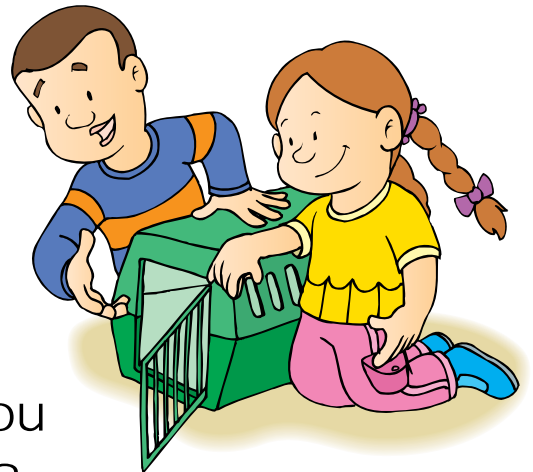


C. Fill in the missing consonants to finish the poem.



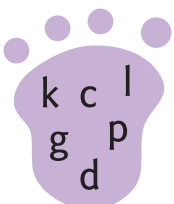
Angus and Erin want
a e .

What kind of e do you
think they should e ?



A io ? No. A io would oa .

A ippopotamu ? No. It would fall through
the loo .



A shar ? No. A shar needs a oo .

A o ? Yes! A o would be oo .